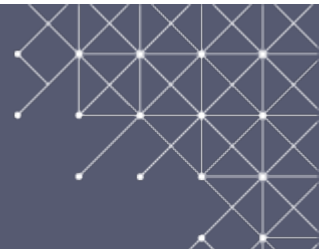


# Release notes v6.1

XEC Director Release v6.1 – w/c Oct 5<sup>th</sup> 2020



## What's new

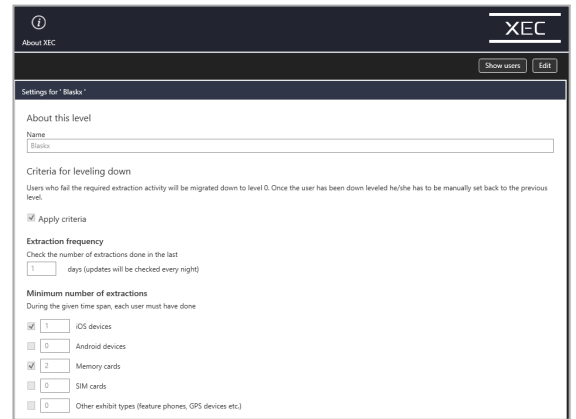
- Advanced automatic user profiling
- Support for multiple Workflows and Watchlists
- Disk space warning
- Secure communication icon
- Microsoft Endpoint Configuration Manager support

Level	Name	Description	Users
0	Disqual	The user hasn't passed the required test or was downgraded due to inactivity	24
1	Basic	The user has passed the required test but lacks experience	9
2	Experienced	The user has basic experience of extractions	3558
3	Advanced	The user is well-versed in extractions	6
4	Expert	The user is highly experienced and can handle any extraction	0

## Advanced automatic user profiling

Improved user profiling including automatic settings based on historical data. You can now set a time span and the minimum number of extraction activities for specific users. If the criteria are not reached within the time span, the user will be downgraded. To upgrade users, you should manually assign the user level.

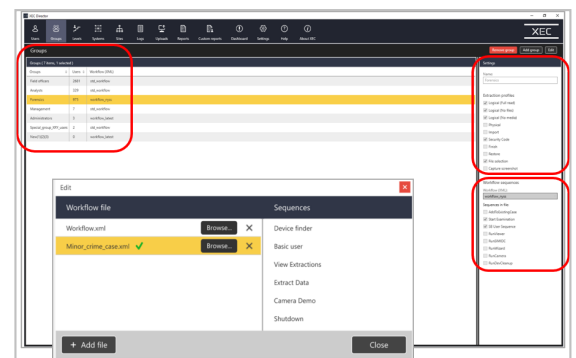
User levels can be used to determine which processing options are made available to the user, and they can be used specifically to support compliance and demonstration of ISO standards within an organization.



## Multiple workflows and Watch lists

In this release, multiple workflow files can be added. Each workflow can then be assigned to one or more user groups. The actual workflow displayed on the client depends on which user group the logged-on user belongs to. For more information, contact [ps@msab.com](mailto:ps@msab.com).

In 6.1, we have added support for import of multiple watch lists to Kiosk, Tablet, and Express clients. You can control which watch lists to apply from the workflow file.



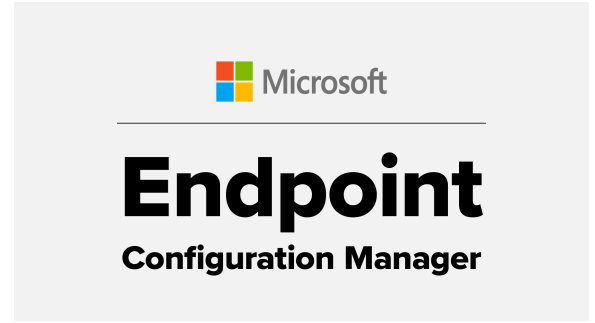
Client Type	Unit Id	Site	Status	Version	HDD space left	License Expiration
KIOSK	DT-DEV3	Site 2	Offline	9.0.0	0 / 954 GB	Expired
KIOSK	DT-DEV4	Site 2	Not...	9.0.0	5 / 931 GB	2021-01-17
EXPRESS	DESKTOP-RHHE9RF	Site 2	Offline	9.2.0	Unknown	Expired

## Disk space warning

An administrator often needs to handle many clients at the same time. Now you can get warnings when there is only a certain amount of Disk space left for Kiosks. A red warning shows on top of the client workstations list when there is a Kiosk with low disk space.

# Microsoft Endpoint Configuration Manager support

It is now possible to configure the automatic initial installation of all MSAB products on client workstations via Microsoft Endpoint Configuration Manager. Provide your IT department with the automatic initial installation package to bypass manual configuration. For frictionless installation, enter the XEC Director URL so that clients can automatically contact XEC Director after initial installation.



## Microsoft Azure cloud

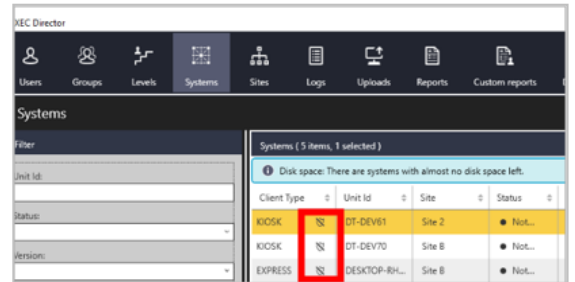
We have successfully completed the Beta testing of Microsoft Azure cloud integration for automatic uploading of XRY files from the kiosk to the cloud. You can now perform extractions on the kiosk and have them saved automatically in the cloud if required.



For more information, contact [ps@msab.com](mailto:ps@msab.com).

## Secure communication warning

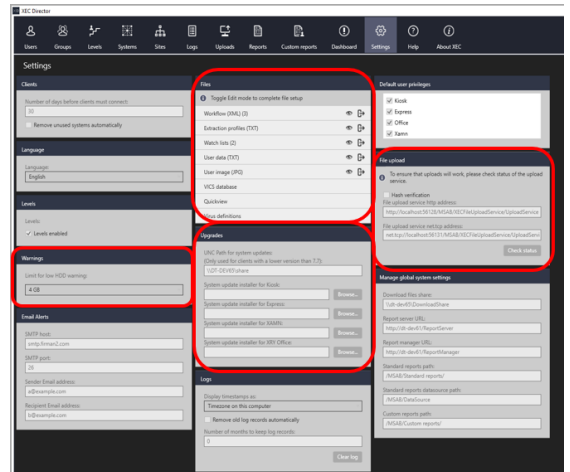
We added a shield icon. You can now directly see whether or not your Kiosk has a secure communication link active via the icon notification.



## New settings

In alignment with all the new features listed here, the following settings are updated:

- Enter the limit for low Disk space warnings (default limit: 20 GB)
- Add multiple workflow files and watch lists.
- Set different update and installer paths to update various client platforms (Kiosk, Tablet, Express etc.) smoothly.
- A *net.tcp* file upload service address can now be added.



## Improved reporting

Improved analysis in reports with the option to exclude generic Android profiles, SD cards, and SIM card extractions from statistics. By excluding these type of the most common extractions, it allows other more relevant devices to appear in management information report of top device lists.

## File upload

File upload permission settings are now available per User group.

**Main Technical Support**  
+46 8739 0270  
Mon – Thur 8am – 5pm (UTC +1)  
Friday 8am – 4pm (UTC +1)

**Technical Support USA**  
+1 703 750 0162  
Mon – Fri 8am – 5pm (UTC -5)

Email: [support@msab.com](mailto:support@msab.com)  
MSAB Customer Forum:  
<https://forum.msab.com>

